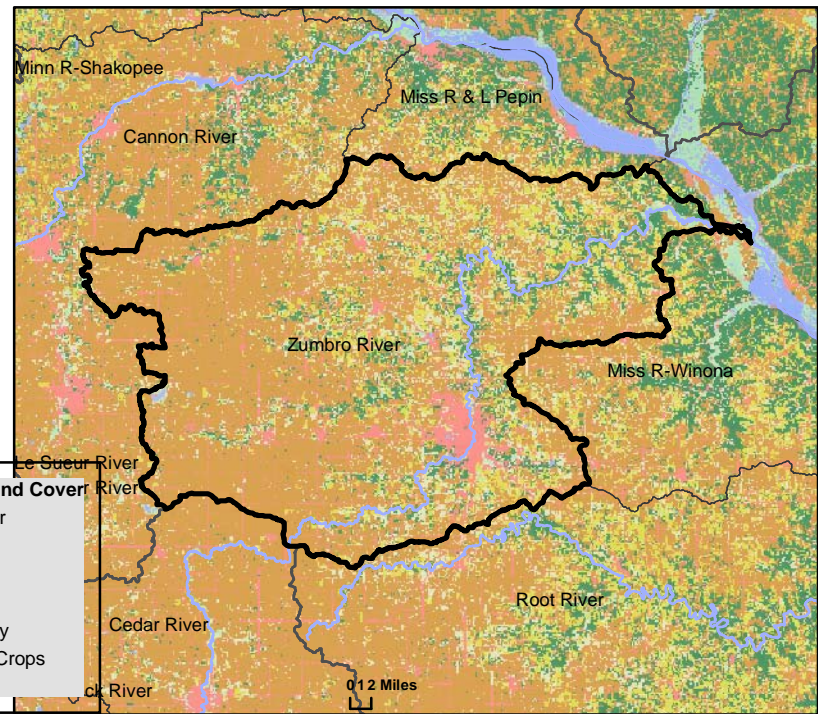
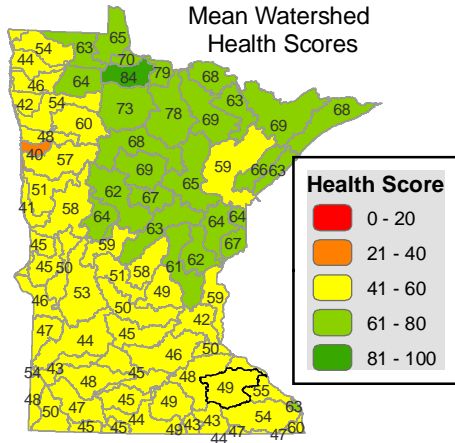


Zumbro River

WATERSHED HEALTH ASSESSMENT SCORES

Mean (average) Health Score 49
Minimum Health Index Score 7
Minimum Health Index: Connectivity - Aquatic

Watershed Assessment Tool
http://www.dnr.state.mn.us/watershed_tool



Watershed Health Scores compare and rank various aspects of ecological health across Minnesota. Index values are based on a variety of data sources, calculations and scientific approaches. Each index is scored on a scale from 0 to 100, with 0 being the least desirable result or condition to 100 being the best existing condition or most desirable result. Major watershed scale rankings may mask the range of conditions that occur at more local scales. A high score may indicate the least impacted condition in Minnesota, not necessarily a healthy condition.

COMPONENT SCORES

HYDROLOGY	GEOMORPHOLOGY	BIOLOGY	CONNECTIVITY	WATER QUALITY
Mean (Ave.) 69 Minimum Index 35	Mean (Ave.) 50 Minimum Index 24	Mean (Ave.) 44 Minimum Index 10	Mean (Ave.) 31 Minimum Index 7	Mean (Ave.) 53 Minimum Index 29
INDEX SCORES Perennial Cover 35 Impervious Cover 83* Withdrawal 95* Storage 62 Flow Variability 69 Metric Sub-Scores Storage: Stream/Ditch Ratio 93 Surface storage 31	INDEX SCORES Soil Erosion Susceptibility 53 Groundwater Susceptibility 24 Climate Vulnerability 74	INDEX SCORES Terrestrial Habitat Quality 10 Stream Species 68 Species Richness 60 At-Risk Species Richness 39	INDEX SCORES Terrestrial Habitat Connectivity 18 Aquatic Connectivity 7 Riparian Connectivity 68 Metric Sub-Scores Aquatic Connectivity: Bridges/Culverts 5 Dams 8	INDEX SCORES Non-Point Source 29 Point Source 79* Assessments 49 Metric Sub-Scores Non-Point Source: Nutrient Application 55 Riparian Impervious 4

*These index values are influenced by very low scores associated with dense urban use of resources. This gives comparatively high scores for outstate Minnesota. Viewing input data is necessary to evaluate possible watershed scale concerns.