

DRAFT ZUMBRO RIVER WATERSHED WRAPS MATERIAL

Total Maximum Daily Loads (TMDLs)

LimnoTech is drafting a report summarizing the watershed TMDLs; it will be public noticed with the WRAPS document in April. Key points and draft material from previous slide presentations in the ZRW WRAPS Lobe meetings are included below.

New TMDL Computations

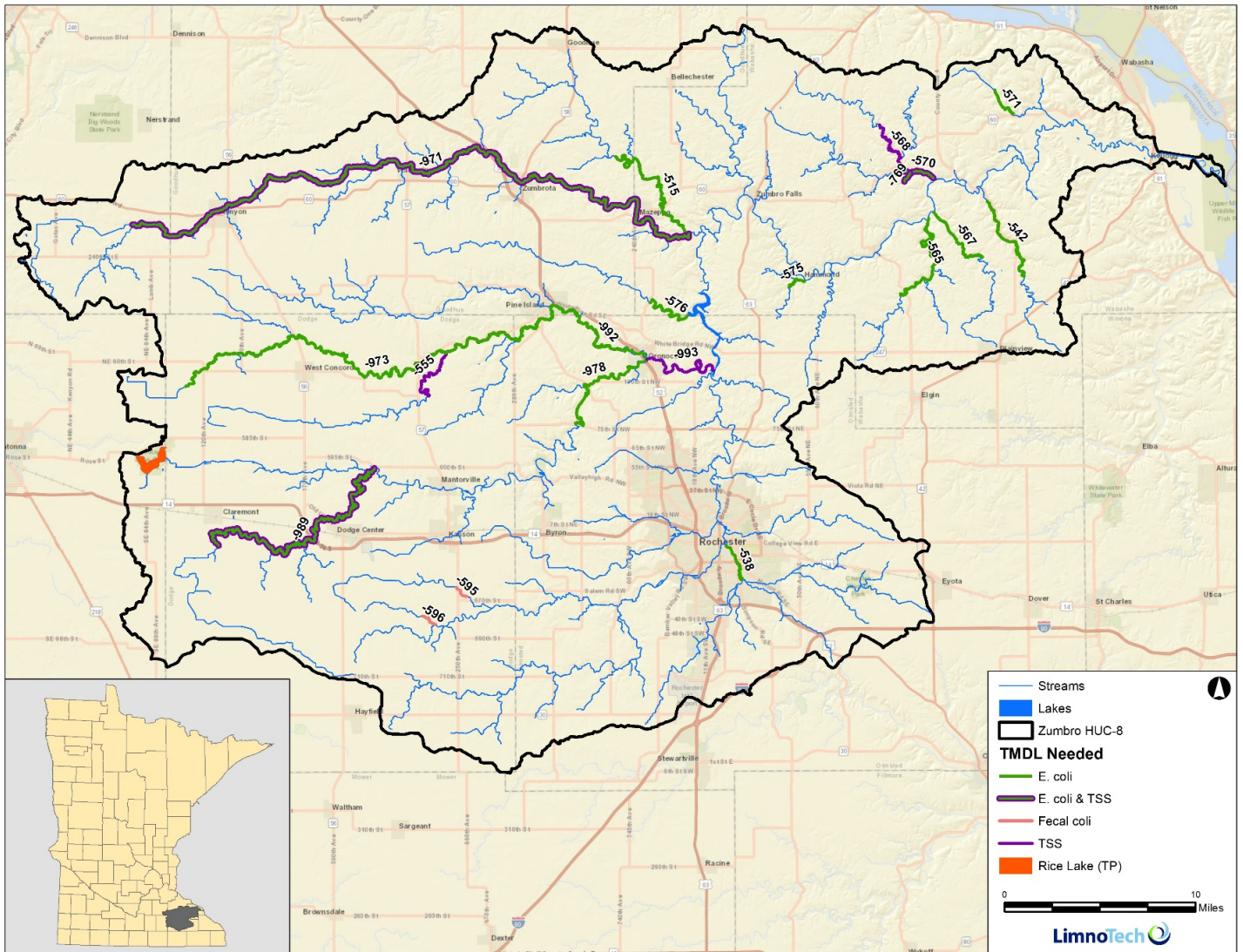
HUC-10 Watershed	TSS	Pathogens	Phosphorus
North Fork Zumbro River	1	2	
Middle Fork Zumbro River	2	2	
South Branch Middle Fork Zumbro River	1	2	Rice Lake
South Fork Zumbro River		3	
Zumbro River	3	8	

The watershed TMDLs report will include seven Total Suspended Solids (TSS) TMDLs, seventeen pathogen TMDLs, and one phosphorus TMDL for Rice Lake. Previously in the Zumbro watershed, seventeen TSS TMDLs (<https://www.pca.state.mn.us/sites/default/files/wq-iw9-13e.pdf>) and five pathogen (fecal coliform) TMDLs (<https://www.pca.state.mn.us/sites/default/files/wq-iw9-03b.pdf>) have been approved by EPA. TSS and pathogen TMDLs typically do not have significant impacts for municipal and industrial wastewater dischargers in Minnesota because in nearly every case the discharge permits include TSS and E. coli limits that are equal to or less than the respective water quality standards for the impaired waters. Because there are previously approved TSS and E. coli impairments downstream of all the watershed MS4s, their permits/SWPPPs should already reflect BMPs to address these pollutants. Accordingly, the new MS4 wasteload allocations noted in the table below will require consideration but will be added to existing lists of downstream wasteload allocations for TSS and E. coli.

Water Body Name	% MS4 Area	MS4 Communities								
		Federal Medical Center	Haverhill Township	Marion Township	MnDOT Outstate District	Olmsted County	Oronoco Township	Rochester City	Rochester Community & Technical College	Rochester Township
Zumbro River, Middle Fork, South Branch -978	0.53%						E. Coli			
Zumbro River, Middle Fork-993	2.05%						TSS			
Bear Creek - 538	64.98%	E. Coli	E. Coli	E. Coli	E. Coli	E. Coli		E. Coli	E. Coli	E. Coli
Dry Run Creek-576	7.96%						E. Coli			

DRAFT ZUMBRO RIVER WATERSHED WRAPS MATERIAL

New TSS and E. Coli TMDLs are Included in the Following Map



FOR DISCUSSION PURPOSES ONLY

DRAFT ZUMBRO RIVER WATERSHED WRAPS MATERIAL

Phosphorus TMDLs

The draft 2016 impaired waters list includes four phosphorus listings in the Zumbro watershed (table below). MPCA is considering site-specific standards for Lake Zumbro (55-0004) and the South Fork Zumbro River (07040004-507). As such the watershed TMDLs report public noticed in spring 2017 will not include phosphorus TMDLs for those assessment units, nor will it include a phosphorus TMDL for the South Branch Middle Fork Zumbro River (07040004-978). Once the water quality goals are finalized a comprehensive analysis of point and nonpoint sources in the Lake Zumbro watershed will be completed; this will include TMDLs and wasteload allocations for point sources that are protective of downstream river and reservoir water quality.

Rice	Lake or Reservoir	2016	Upper Mississippi River, Lower Portion	74-0001-00
Zumbro	Lake or Reservoir	2002	Upper Mississippi River, Lower Portion	55-0004-00
Zumbro River, Middle Fork, South Branch	75th St NW to MFk Zumbro R	2016	Upper Mississippi River, Lower Portion	07040004-978
Zumbro River, South Fork	Cascade Cr to Zumbro Lk	2016	Upper Mississippi River, Lower Portion	07040004-507

For more information, including lists of impaired waters AUIDs that will be addressed in the watershed TMDLs report, contact justin.watkins@state.mn.us. Note that there will be a public comment period during which TMDLs may be examined in detail; letters submitted during that period will become part of the administrative record.